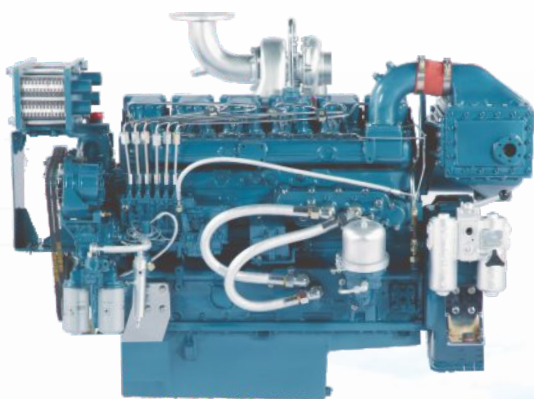




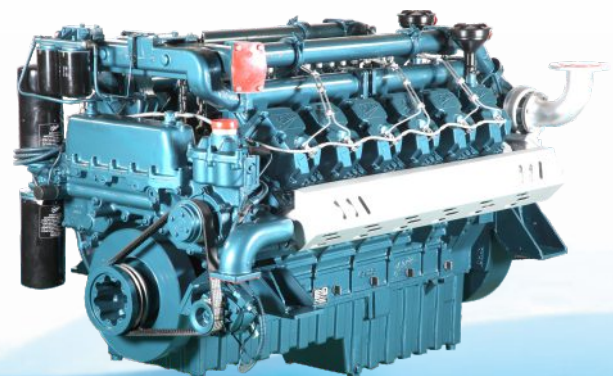
Enriching Lives

KIRLOSKAR

MARINE ENGINE FOR FISHING VESSEL



SL Series



DV Series

SALIENT FEATURES

Air Intake System

- Intake Air filter
- Air intake manifold
- After Cooler
- Turbo Charger

Exhaust System

- Expansion bellow
- Exhaust Manifold

Fuel System

- Fuel filter
- Fuel injection pump
- Flexible fuel line

Cooling System

- Heat exchanger with in built expansion tank & pressure cap
- Thermostat installed in the engine
- Engine driven fresh water pump
- Sea water (centrifugal) pump (3 mtr suction lift)

Starting System

24V DC Electrical Starting System consisting of

- 24V DC Starter
- 24V DC Battery charging alternator

Lubrication system

- Deep lube oil sump
- Lube oil pump - gear driven
- Lube oil cooler
- Oil filler tube with cap and lube oil dipstick for oil level check
- Lube oil filter

Engine Safeties

- Low lube oil pressure – alarm and trip
- High fresh water temperature – alarm and trip
- High lube oil temperature – alarm
- Over speed – trip
- Start & stop Facility

Other Engine Parts

- Flywheel
- Flywheel housing

Series	6R	SL		DV		
Engine Model	6R1080TA-(FP)	6SL8800TA-(FP ₁)	6SL8800TA-(FP ₂)	DV8-(FP)	DV10-(FP)	DV12-(FP)
Power (BHP)	185	310	340	480	598	740
Speed (RPM)	1800	1800	2100	1800	1800	1800
Aspiration	Turbocharged After Cooled					
Crankshaft rotating Direction (Looking from flywheel end)	Anticlockwise					
No. of cylinders	6	6		8	10	12
Bore x Stroke (mm)	105X125	118X135		130X150		
Displacement (Ltr)	6.5	8.86		16	20	24
Fuel consumption (g/hp-hr)*	148	148	155	155	151	158
Starting method	Electrical	Electrical	Electrical	Electrical	Electrical	Electrical
Oil Sum Capacity (Ltr)	15	29.5		47	50	57
Net Weight (kg)**	980	1275	1275	1950	2150	2500

Notes :

• Engine power as per ISO 3046 / BS 5514)

• In view of continuous product up gradations, specifications given in the above table are subjected to change without prior notice.

* Declared SFC values are at Engine Gross Power, under NTP conditions

** Declared weights are considering KOEL standard scope of supply. Any changes in standard scope may leads to changes in the total weight of Engine.



Enriching Lives

KIRLOSKAR OIL ENGINES LIMITED

A Kirloskar Group Company

Laxmanrao Kirloskar Road, Khadki, Pune 411 003 INDIA.

Tel. : +91(20) 6608 4000, 2581 0341

Fax : +91(20) 2581 3208, 2581 0209

www.koel.co.in

Stamp of
Authorised
Representative